

**SCANTEC** Industries NV

Westkaai 7•B-2170 Merksem - Antwerpen•België  
Tel. : +32 (0)3/646 99 44•Fax : +32 (0)3/644 04 05

e-mail : info@scantecnv.be



## GM PROBES

### SS300 PROBE

Pancake Geiger for contamination measurements.

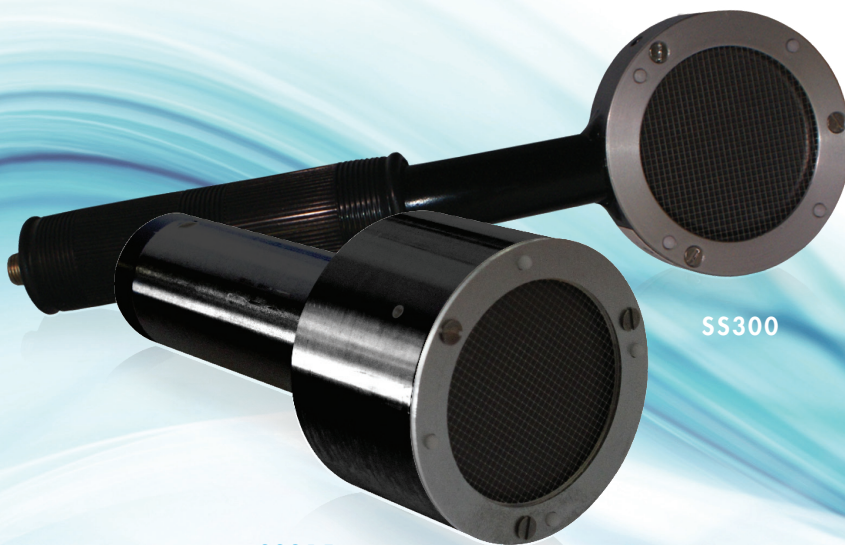
An uncompensated pancake (550V) Geiger based probe for alpha, beta and gamma contamination measurement.

### SS315 PROBE

Pancake Geiger for contamination measurements.

Functionally identical to the SS300, but with a different probe geometry.

	SS300	SS315
Operating Voltage	550 V	550 V
Window	15.5 cm <sup>2</sup> 1.6 to 2.0 mg/cm <sup>2</sup> mica	15.5 cm <sup>2</sup> 1.6 to 2.0 mg/cm <sup>2</sup> mica
Measurement Range	0 - 5 kcps	0 - 5 kcps
Plateau Length	150 V	150 V
Temperature Range	-10° to +50°C	-10° to +50°C
Energy Response	20 keV - 2 MeV Gamma down to 40 keV Beta above 3 MeV Alpha	20 keV - 2 MeV Gamma down to 40 keV Beta above 3 MeV Alpha
Housing Connector	MHV	MHV
Dimensions	Ø 70 x 254 x 64 mm	Ø 70 x 180 mm
Active Area	15.5 cm <sup>2</sup>	15.5 cm <sup>2</sup>
Weight	280g	450 g



SS315

SS300

### EFFICIENCIES

Listed as percentage of 4pi emission rate from Ø44.5 - 50.8 mm source.

#### Typ. Efficiencies

45% <sup>137</sup> Cs
33% <sup>60</sup> Co
50% <sup>90</sup> Sr- <sup>90</sup> Y
16% <sup>14</sup> C
23% <sup>241</sup> Am
27% <sup>238</sup> Pu

## SS330 PROBE

Compensated pancake Geiger for dose rate measurement.

An excellent general purpose end window GM probe with H\*(10) energy compensation, which permits reliable measurements from ambient background up to 1 mSv/hr.

## SS335 PROBE

Compensated pancake Geiger for dose rate measurement.

Functionally identical to the SS330, but with a different probe geometry.

## SS340 PROBE

Side window Geiger probe for ambient gamma radiation measurement, to H\*(10).

Range: 0 - 2 mSv/hr

Energy: 45 keV - 2 MeV

	SS330	SS335	SS340
Operating Voltage	550 V	550 V	500 V
Measurement Range	0.1 $\mu$ Sv/hr - 1 mSv/hr	0.1 $\mu$ Sv/hr - 1 mSv/hr	0.1 $\mu$ Sv/hr - 2 mSv/hr
Plateau Length	150 V minimum	150 V minimum	200 V minimum
Dead Time	100 $\mu$ s	100 $\mu$ s	110 $\mu$ s
Temperature Range	-10°C to +50°C	-10°C to +50°C	-10°C to +50°C
Gamma Sensitivity	Typically 5 cps/ $\mu$ Sv/hr	Typically 5 cps/ $\mu$ Sv/hr	Typically 2 cps/ $\mu$ Sv/hr
Energy Sensitivity	H*(10) for 20 keV - 1.5 MeV	H*(10) for 20 keV - 1.5 MeV	H*(10) for 45 keV - 1.5 MeV
Housing Connector	MHV	MHV	MHV
Dimensions	Ø 70 x 254 x 64 mm	Ø 70 x 180 mm	Ø 25 x 135 mm
Active Area	15.5 cm <sup>2</sup>	15.5 cm <sup>2</sup>	40 mm
Weight	300 g	450 g	100 g

